



Title:	27. Winter view along Gloucestershire Way at Rushwood Kennels	HFoV (°)	90	Visualisation type	1	View direction	South West
Date, time:	15 January 2020, 10:16	Scale/ Enlargement factor	96% at A1	Projection	Cylindrical	Camera (lens)	Nikon D610, FFS (Nikon 50mm)



Title:	27. Summer view along Gloucestershire Way at Rushwood Kennels	HFoV (°)	90	Visualisation type	1	View direction	South West
Date, time:	9 September 2019, 14:31	Scale/ Enlargement factor	96% at A1	Projection	Cylindrical	Camera (lens)	Nikon D610, FFS (Nikon 50mm)



Issue	Date	Comment	By	Chkd	Appd
C01	2021-05-20	DCO Application Submission (May 2021)	HS	AK	JP

A3 - Stage Completed



Winter baseline photograph



Operation year 1 winter photomontage

Title	27. Year 1 view along Gloucestershire Way at Rushwood Kennels	HFoV (°)	90	Visualisation type	4	Camera (lens)	Sony A7rIV, FFS (35mm)
Date, time	15 January 2020, 10:16	Scale/ Enlargement factor	96% at A1	Projection	Cylindrical	Height of camera lens	1.6m
Coordinates	SO 94083 15513 275.883 m AOD	Distance from site boundary	0m	View direction	240° from N		
To be viewed at comfortable arms length							



ARUP

Issue	Date	Comment	By	Chkd	Appd
C01	2021-05-20	DCO Application Submission (May 2021)	HS	AK	JP

A3 - Stage Completed

A417 Missing Link Project
Figure 7.10 Photosheets and Visualisations. Sheet 48 of 92
 HE551505-ARP-ELS-X_XX_XXXX_X-VS-LE-000005



Winter baseline photograph



Operation year 15 winter photomontage

Title	27. Year 5 view along Gloucestershire Way at Rushwood Kennels	HFoV (°)	90	Visualisation type	4	Camera (lens)	Sony A7rIV, FFS (35mm)
Date, time	15 January 2020, 10:16	Scale/ Enlargement factor	96% at A1	Projection	Cylindrical	Height of camera lens	1.6m
Coordinates	SO 94083 15513 275.883 m AOD	Distance from site boundary	0m	View direction	240° from N		
To be viewed at comfortable arms length							

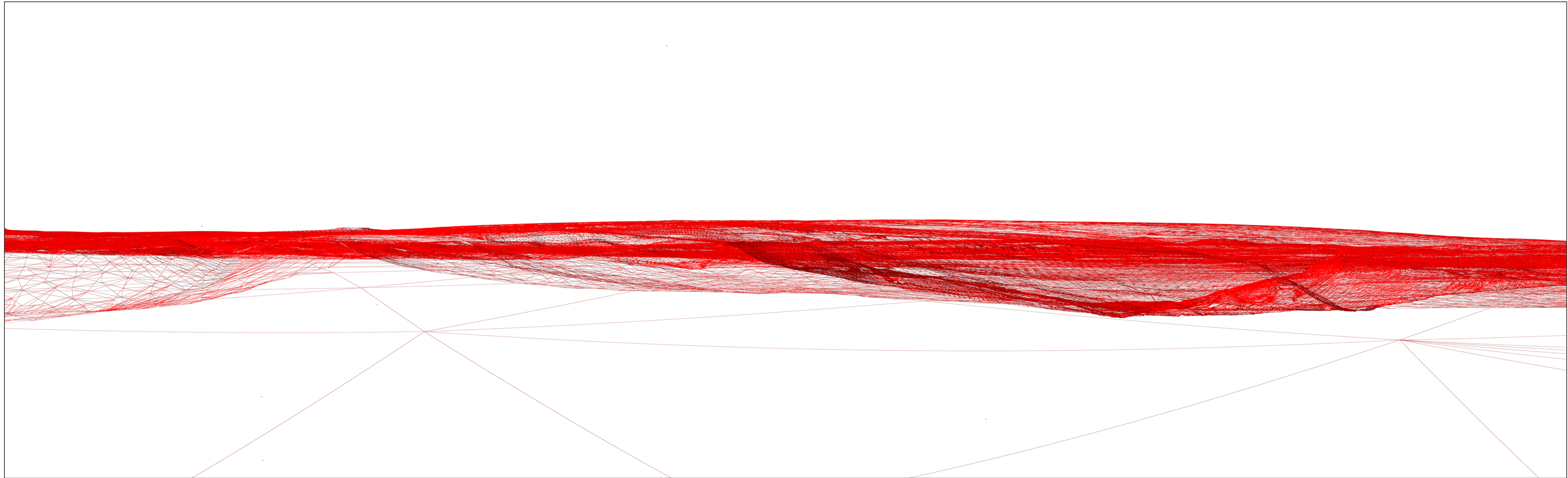


ARUP

Issue	Date	Comment	By	Chkd	Appd
C01	2021-05-20	DCO Application Submission (May 2021)	HS	AK	JP

A3 - Stage Completed

A417 Missing Link Project
Figure 7.10 Photosheets and Visualisations. Sheet 49 of 92
 HE551505-ARP-ELS-X_XX_XXXX_X-VS-LE-000005



Wireline



Composite image



NOTE: Tripod location photo of verifiable photography not available from surveyor. The photo shown is of the tripod location for baseline winter photography taken by the landscape architect, which was taken from the same position as the verifiable view.

Tripod location

Title	27. Working view along Gloucestershire Way at Rushwood Kennels	HFoV (°)	90	Visualisation type	4	Camera (lens)	Sony A7rIV, FFS (35mm)
Date, time	15 January 2020, 10:16	Scale/ Enlargement factor	96% at A1	Projection	Cylindrical	Height of camera lens	1.6m
Coordinates	SO 94083 15513 275.883 m AOD	Distance from site boundary	0m	View direction	240° from N		

To be viewed at comfortable arms length

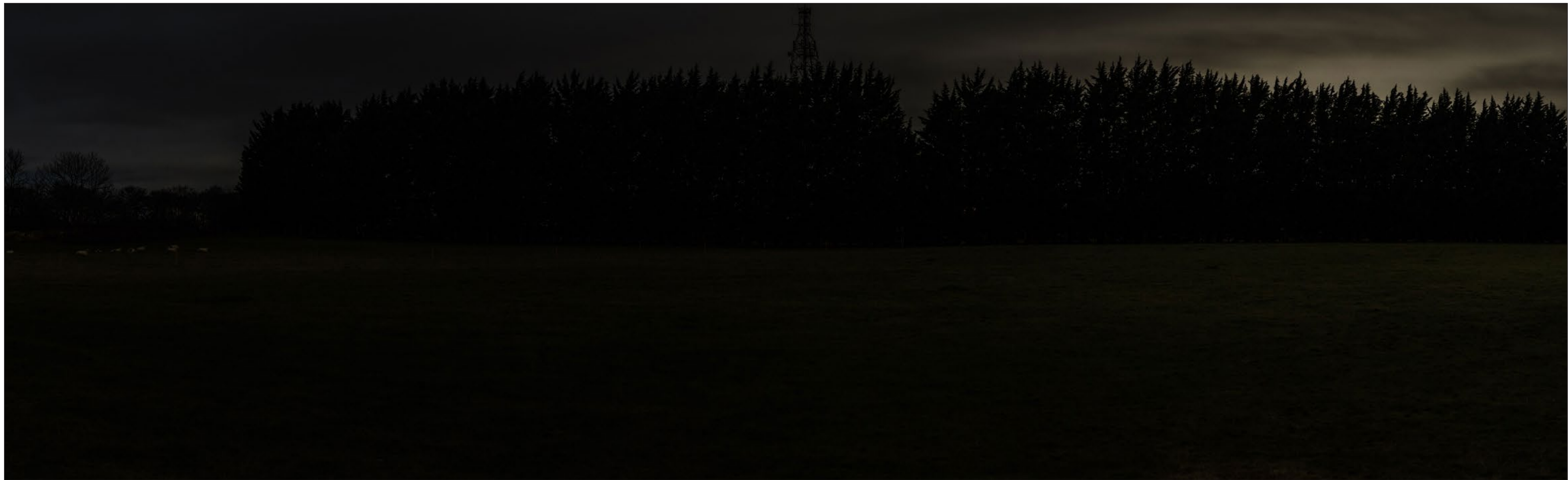


ARUP

Issue	Date	Comment	By	Chkd	Appd
C01	2021-02-20	DCO Application Submission (May 2021)	HS	AK	JP

A3 - Stage Completed

A417 Missing Link Project
Figure 7.10 Photosheets and Visualisations. Sheet 50 of 92
 HE551505-ARP-ELS-X_XX_XXXX_X-VS-LE-000005



Night time representation



Night time data

Title	27. Night view along Gloucestershire Way at Rushwood Kennels	HFoV (°)	90	Visualisation type	4	Camera (lens)	Sony A7rIV, FFS (35mm)
Date, time	4 February 2020	Scale/ Enlargement factor	96% at A1	Projection	Cylindrical	Height of camera lens	1.6m
Coordinates	SO 94083 15513 275.883 m AOD	Distance from site boundary	0m	View direction	240° from N		
To be viewed at comfortable arms length							



ARUP

Issue	Date	Comment	By	Chkd	Appd
C01	2021-05-20	DCO Application Submission (May 2021)	HS	AK	JP

A3 - Stage Completed

A417 Missing Link Project
Figure 7.10 Photosheets and Visualisations. Sheet 51 of 92
 HE551505-ARP-ELS-X_XX_XXXX_X-VS-LE-000005



Title:	28. Winter view along Coldwell Bottom from Gloucester Way by long barrow	HFoV (°)	90	Visualisation type	1	View direction	South West
Date, time:	28 November 2019, 12:23	Scale/ Enlargement factor	96% at A1	Projection	Cylindrical	Camera (lens)	Nikon D610, FFS (Nikon 50mm)



Title:	28. Summer view along Coldwell Bottom from Gloucester Way by long barrow	HFoV (°)	90	Visualisation type	1	View direction	South West
Date, time:	19 September 2019, 11:55	Scale/ Enlargement factor	96% at A1	Projection	Cylindrical	Camera (lens)	Nikon D610, FFS (Nikon 50mm)



ARUP

Issue	Date	Comment	By	Chkd	Appd
C01	2021-05-20	DCO Application Submission (May 2021)	HS	AK	JP

A3 - Stage Completed

A417 Missing Link Project
Figure 7.10 Photosheets and Visualisations. Sheet 52 of 92
 HE551505-ARP-ELS-X_XX_XXXX_X-VS-LE-000005



Title:	29. Winter view to Coldwell Bottom from South of Upper Coberley	HFoV (°)	90	Visualisation type	1	View direction	West
Date, time:	28 November 2019, 11:50	Scale/ Enlargement factor	96% at A1	Projection	Cylindrical	Camera (lens)	Nikon D610, FFS (Nikon 50mm)



Title:	29. Summer view to Coldwell Bottom from South of Upper Coberley	HFoV (°)	90	Visualisation type	1	View direction	West
Date, time:	19 September 2019, 11:15	Scale/ Enlargement factor	96% at A1	Projection	Cylindrical	Camera (lens)	Nikon D610, FFS (Nikon 50mm)



ARUP

Issue	Date	Comment	By	Chkd	Appd
C01	2021-05-20	DCO Application Submission (May 2021)	HS	AK	JP

A3 - Stage Completed

A417 Missing Link Project
Figure 7.10 Photosheets and Visualisations. Sheet 53 of 92
 HE551505-ARP-ELS-X_XX_XXXX_X-VS-LE-000005



Title:	30. Winter view to Shab Hill from permissive path at Cally Hill Plantation	HFoV (°)	90	Visualisation type	1	View direction	West
Date, time:	21 November 2019, 13:37	Scale/ Enlargement factor	96% at A1	Projection	Cylindrical	Camera (lens)	Nikon D610, FFS (Nikon 50mm)



Title:	30. Summer view to Shab Hill from permissive path at Cally Hill Plantation	HFoV (°)	90	Visualisation type	1	View direction	West
Date, time:	19 September 2019, 12:31	Scale/ Enlargement factor	96% at A1	Projection	Cylindrical	Camera (lens)	Nikon D610, FFS (Nikon 50mm)



ARUP

Issue	Date	Comment	By	Chkd	Appd
C01	2021-05-20	DCO Application Submission (May 2021)	HS	AK	JP

A3 - Stage Completed



Winter baseline photograph



Operation year 1 winter photomontage

Title	30. Year 1 view to Shab Hill from permissive path at Cally Hill Plantation	HFoV (°)	90	Visualisation type	4	Camera (lens)	Sony A7rIV, FFS (35mm)
Date, time	4 February 2020, 11:22	Scale/ Enlargement factor	96% at A1	Projection	Cylindrical	Height of camera lens	1.6m
Coordinates	SO 94682 15067 225m AOD	Distance from site boundary	0m	View direction	280° from N		
To be viewed at comfortable arms length							



ARUP

Issue	Date	Comment	By	Chkd	Appd
C01	2021-05-20	DCO Application Submission (May 2021)	HS	AK	JP

A3 - Stage Completed

A417 Missing Link Project
Figure 7.10 Photosheets and Visualisations. Sheet 55 of 92
 HE551505-ARP-ELS-X_XX_XXXX_X-VS-LE-000005



Winter baseline photograph



Operation year 15 winter photomontage

Title	30. Year 15 view to Shab Hill from permissive path at Cally Hill Plantation	HFoV (°)	90	Visualisation type	4	Camera (lens)	Sony A7rIV, FFS (35mm)
Date, time	4 February 2020, 11:22	Scale/ Enlargement factor	96% at A1	Projection	Cylindrical	Height of camera lens	1.6m
Coordinates	SO 94682 15067 225m AOD	Distance from site boundary	0m	View direction	280° from N		
To be viewed at comfortable arms length							

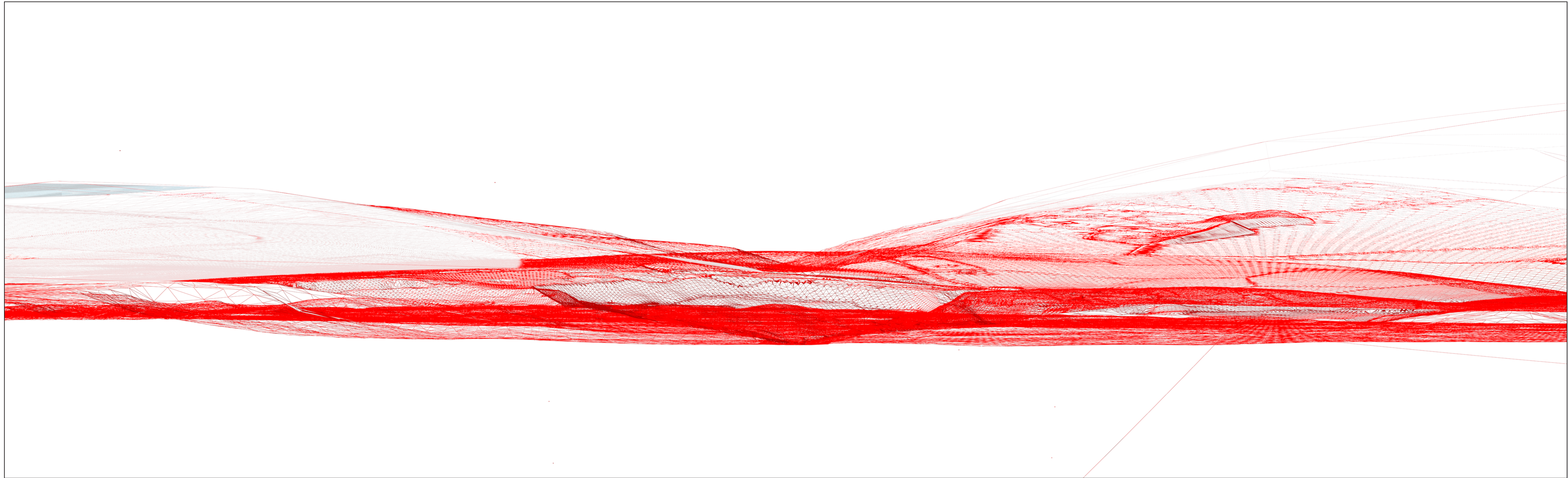


ARUP

Issue	Date	Comment	By	Chkd	Appd
C01	2021-05-20	DCO Application Submission (May 2021)	HS	AK	JP

A3 - Stage Completed

A417 Missing Link Project
Figure 7.10 Photosheets and Visualisations. Sheet 56 of 92
 HE551505-ARP-ELS-X_XX_XXXX_X-VS-LE-000005



Wireline



Projection
Camera
Lens
FOV
Canvas size
Pixel size
Linear pixel
Virtual film
Virtual Focal
Date
Time



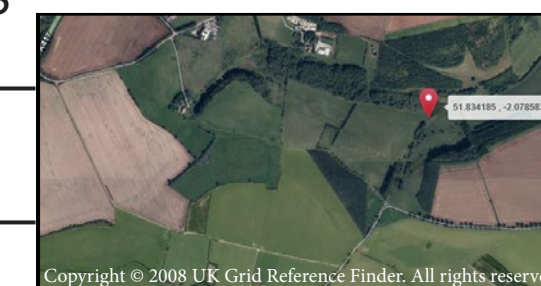
NOTE: Tripod location photo of verifiable photography not available from surveyor. The photo shown is of the tripod location for baseline winter photography taken by the landscape architect, which was taken from the same position as the verifiable view.

Composite image

Tripod location

Title	30. Working view to Shab Hill from permissive path at Cally Hill Plantation	HFOV (°)	90	Visualisation type	4	Camera (lens)	Sony A7rIV, FFS (35mm)
Date, time	4 February 2020, 11:22	Scale/ Enlargement factor	96% at A1	Projection	Cylindrical	Height of camera lens	1.6m
Coordinates	SO 94682 15067 225m AOD	Distance from site boundary	0m	View direction	280° from N		

To be viewed at comfortable arms length



ARUP

Issue	Date	Comment	By	Chkd	Appd
C01	2021-02-20	DCO Application Submission (May 2021)	HS	AK	JP

A3 - Stage Completed

A417 Missing Link Project
Figure 7.10 Photosheets and Visualisations. Sheet 57 of 92
 HE551505-ARP-ELS-X_XX_XXXX_X-VS-LE-000005



Title:	31. Winter view to Stockwell from permissive path at Shab Hill east of scheme	HFoV (°)	90	Visualisation type	1	View direction	South
Date, time:	11 March 2020, 12:02	Scale/ Enlargement factor	96% at A1	Projection	Cylindrical	Camera (lens)	Nikon D610, FFS (Nikon 50mm)



Title:	31. Summer view to Stockwell from permissive path at Shab Hill east of scheme	HFoV (°)	90	Visualisation type	1	View direction	South
Date, time:	19 September 2019, 12:52	Scale/ Enlargement factor	96% at A1	Projection	Cylindrical	Camera (lens)	Nikon D610, FFS (Nikon 50mm)



ARUP

Issue	Date	Comment	By	Chkd	Appd
C01	2021-05-20	DCO Application Submission (May 2021)	HS	AK	JP

A3 - Stage Completed

A417 Missing Link Project
Figure 7.10 Photosheets and Visualisations. Sheet 58 of 92
 HE551505-ARP-ELS-X_XX_XXXX_X-VS-LE-000005